

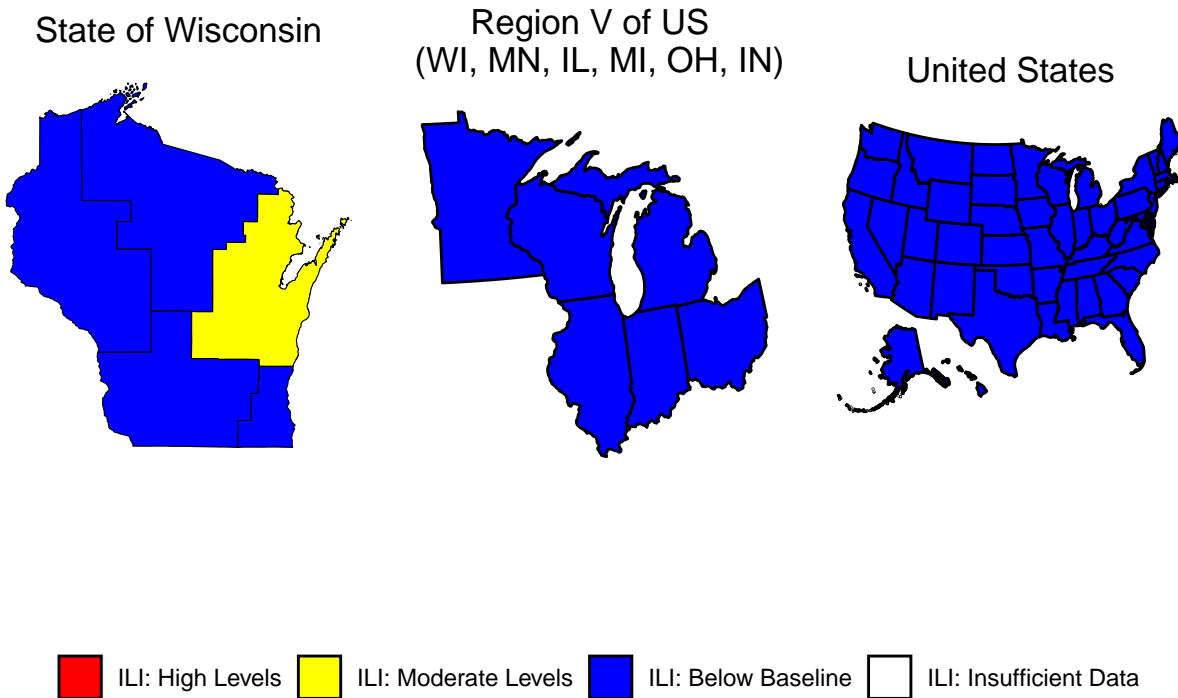


# Respiratory Virus Surveillance Report

Week 18, Ending May 4, 2024

Wisconsin Department of Health Services | Division of Public Health |  
Bureau of Communicable Diseases | Communicable Diseases Epidemiology Section |  
[www.dhs.wisconsin.gov/dph/bcd.html](http://www.dhs.wisconsin.gov/dph/bcd.html) | [dhsdphbcd@dhs.wi.gov](mailto:dhsdphbcd@dhs.wi.gov)

# Influenza-like Illness (ILI) Activity



## Weekly Respiratory Virus Data, At-A-Glance

### Predominant virus of the week:

Rhinovirus/Enterovirus

#### Key Findings:

- COVID-19, influenza, and RSV continued to circulate at low levels in Wisconsin.
- Influenza-like illness activity remains low in Wisconsin.
- Rhino/enterovirus, human metapneumovirus, and parainfluenza virus activities are elevated in Wisconsin.

#### Influenza-associated pediatric deaths reported:

	Week 18, 2024	Since September 3
<i>Wisconsin</i>	0	0
<i>Nationwide</i>	6	164

For National US influenza surveillance statistics visit: [www.cdc.gov/flu/weekly/](http://www.cdc.gov/flu/weekly/)

# Respiratory Virus and Pneumonia-Associated Mortality

Percent of deaths associated with influenza, RSV, COVID-19, or pneumonia by week, Vital Records



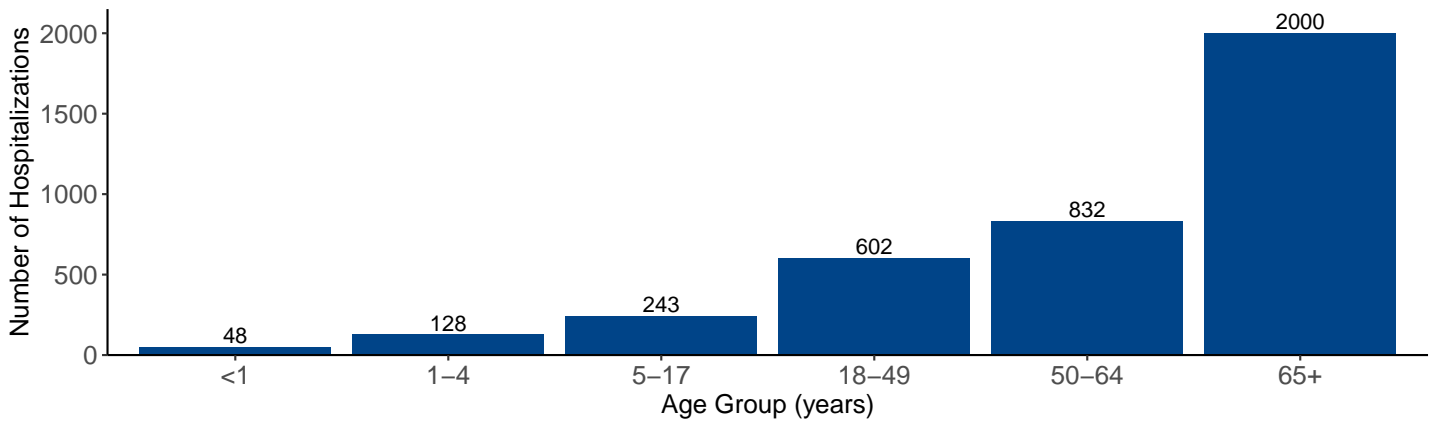
Respiratory virus and pneumonia associated deaths by most recent 3-week period, Vital Records

Season week	Pneumonia (P)	Influenza (I)	COVID-19 (C)	RSV (R)	P, I, C or R	Percent PICR of all
16	53	9	4	0	63	6%
17	47	3	8	0	54	5%
18	36	2	3	0	40	5%

# Influenza-Associated Hospitalizations

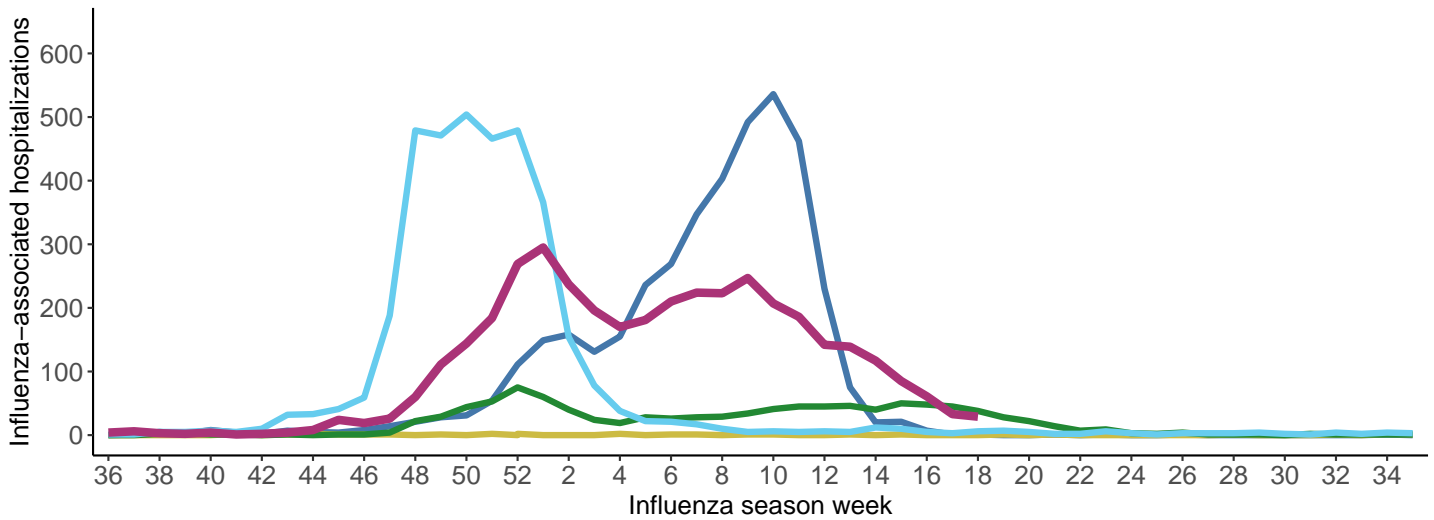
## Influenza-associated hospitalizations by age group, WEDSS

September 3, 2023 to present



## Weekly influenza-associated hospitalizations by influenza season, WEDSS

2019-2020 2020-2021 2021-2022 2022-2023 2023-2024

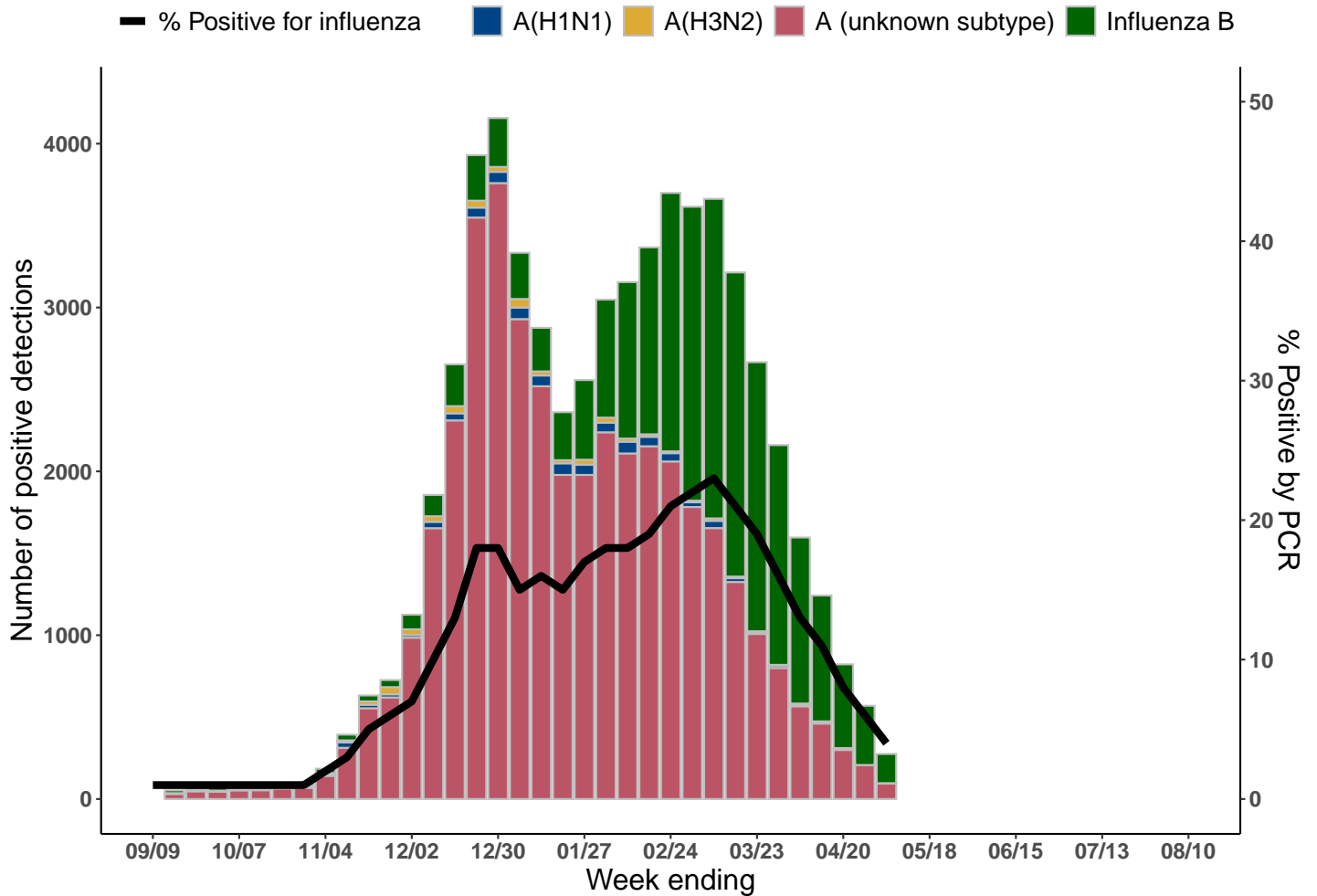


Influenza Season	Cumulative Hospitalizations Through Week 18	Entire Season
2019-2020	3998	4002
2020-2021	21	28
2021-2022	923	1021
2022-2023	3555	3610
2023-2024	3853	-

These data are preliminary and subject to change as more information is received.

# Wisconsin Laboratory Surveillance

## Wisconsin positive influenza results and subtypes by PCR, NREVSS

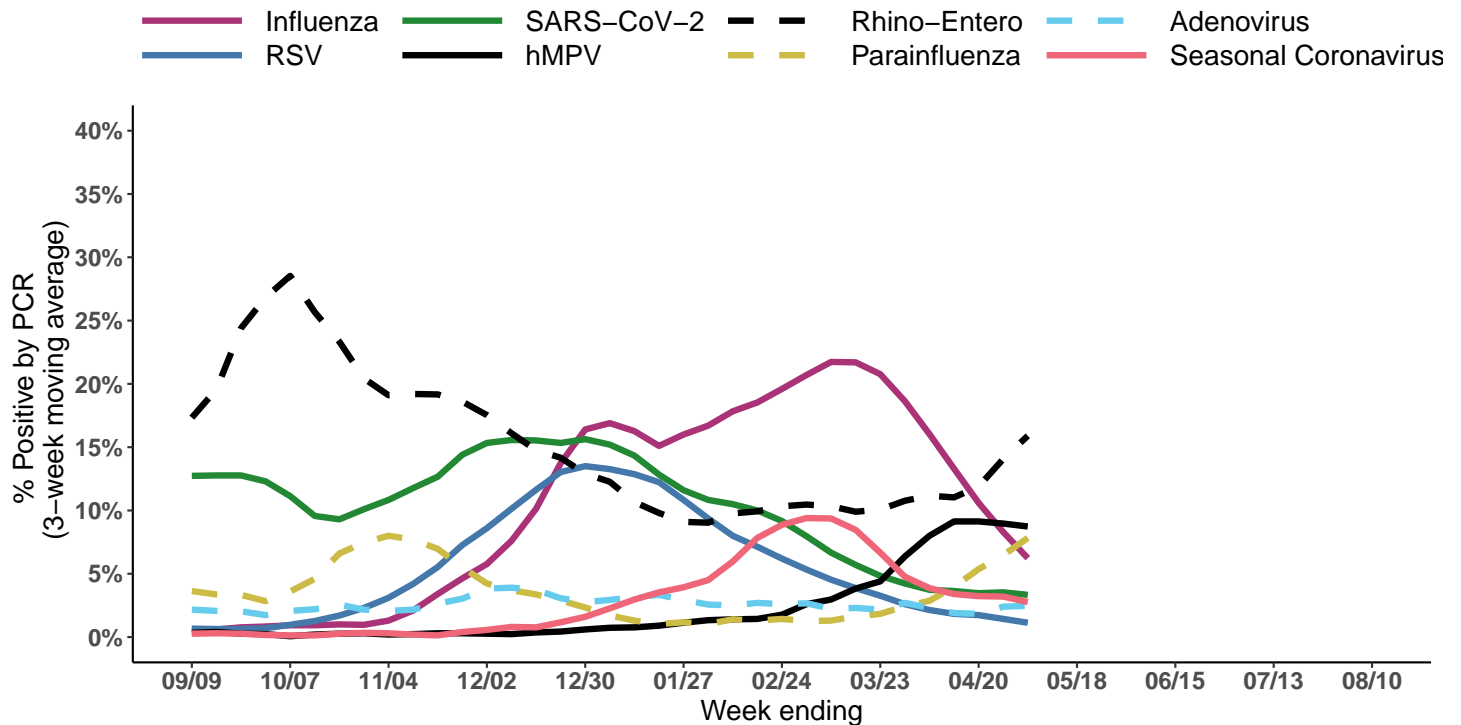


Cumulative number of positive influenza PCR tests by subtype, NREVSS  
September 3, 2023 to present

Measure	Influenza A(H1N1)pdm2009	Influenza A(H3N2)	Influenza A Unknown	Influenza B	Total
Total positive (n)	1040	564	40398	18455	60457
% of total positive	2%	1%	67%	31%	100%

# Wisconsin Laboratory Surveillance for Respiratory Viruses

Percent positivity of respiratory viruses tested by PCR, NREVSS



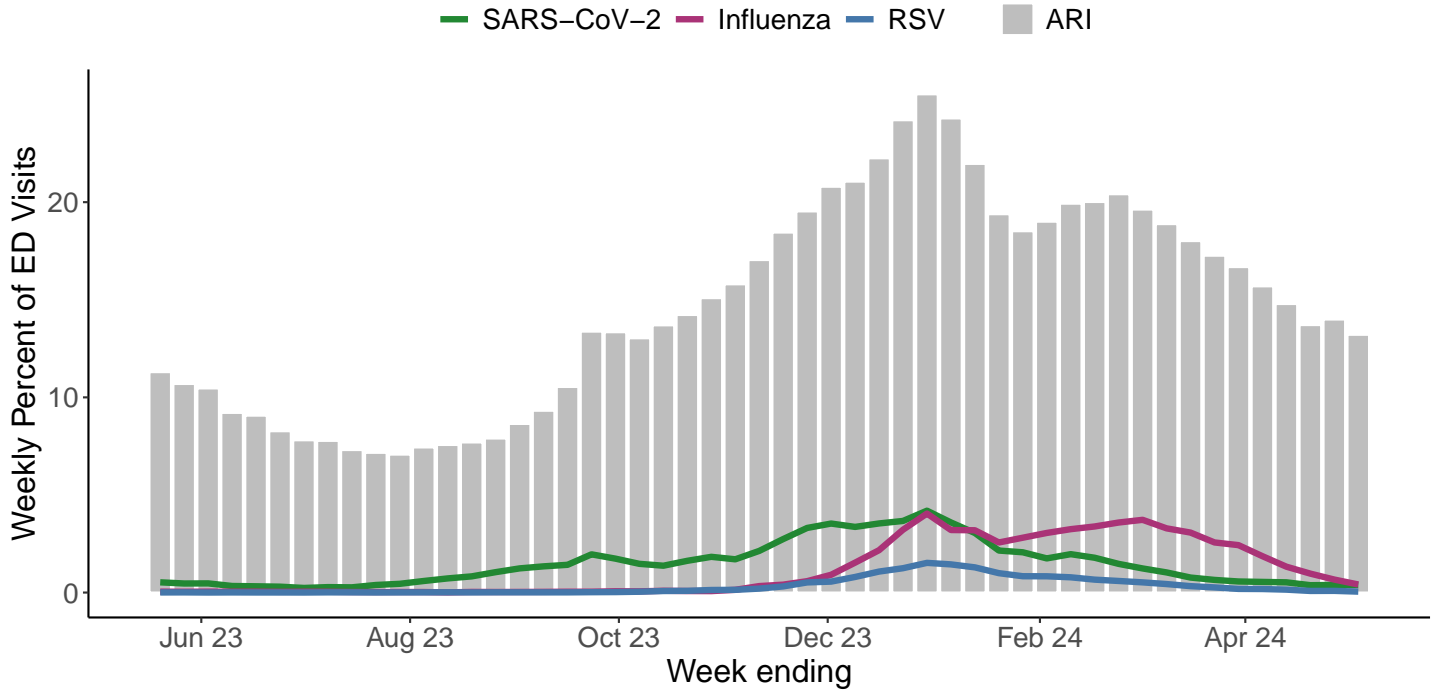
Number and percent positivity of respiratory viruses tested by PCR, NREVSS  
Week 18, Ending on May 04, 2024

Respiratory virus	Tested	Positive (n)	Positive (%)	H3N2	2009 H1N1	Unknown	Influenza B
Influenza	6,236	275	4.4%	1	2	94	178
Respiratory virus	Tested	Positive (n)	Positive (%)	Parainfluenza 1	Parainfluenza 2	Parainfluenza 3	Parainfluenza 4
Parainfluenza	685	66	9.6%	1	0	63	2

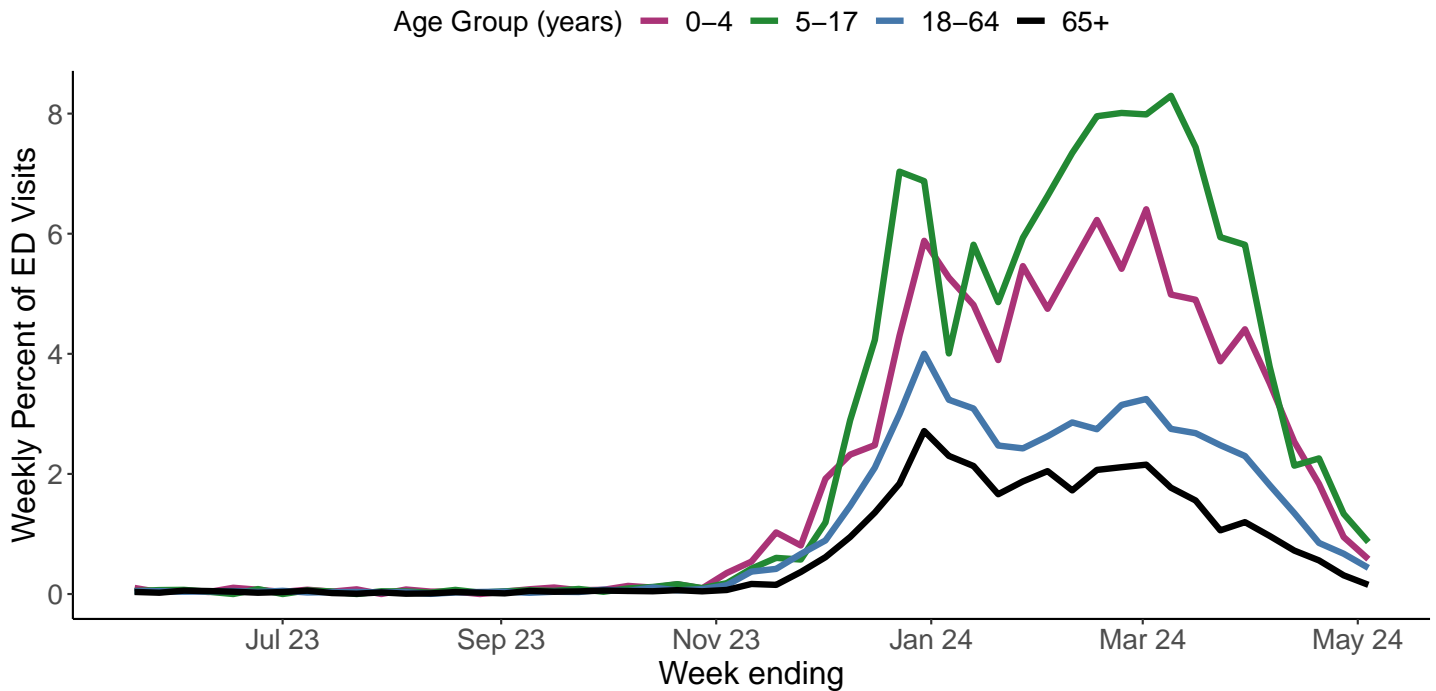
Respiratory virus	Tested	Positive (n)	Positive (%)
Respiratory Syncytial Virus	5,056	47	0.9%
Adenovirus	685	10	1.5%
Seasonal Coronavirus	555	10	1.8%
HMPV	685	57	8.3%
Rhinovirus/Enterovirus	1,041	171	16.4%
COVID-19	6,880	223	3.2%

# Respiratory Virus Activity in the Emergency Department (ED)

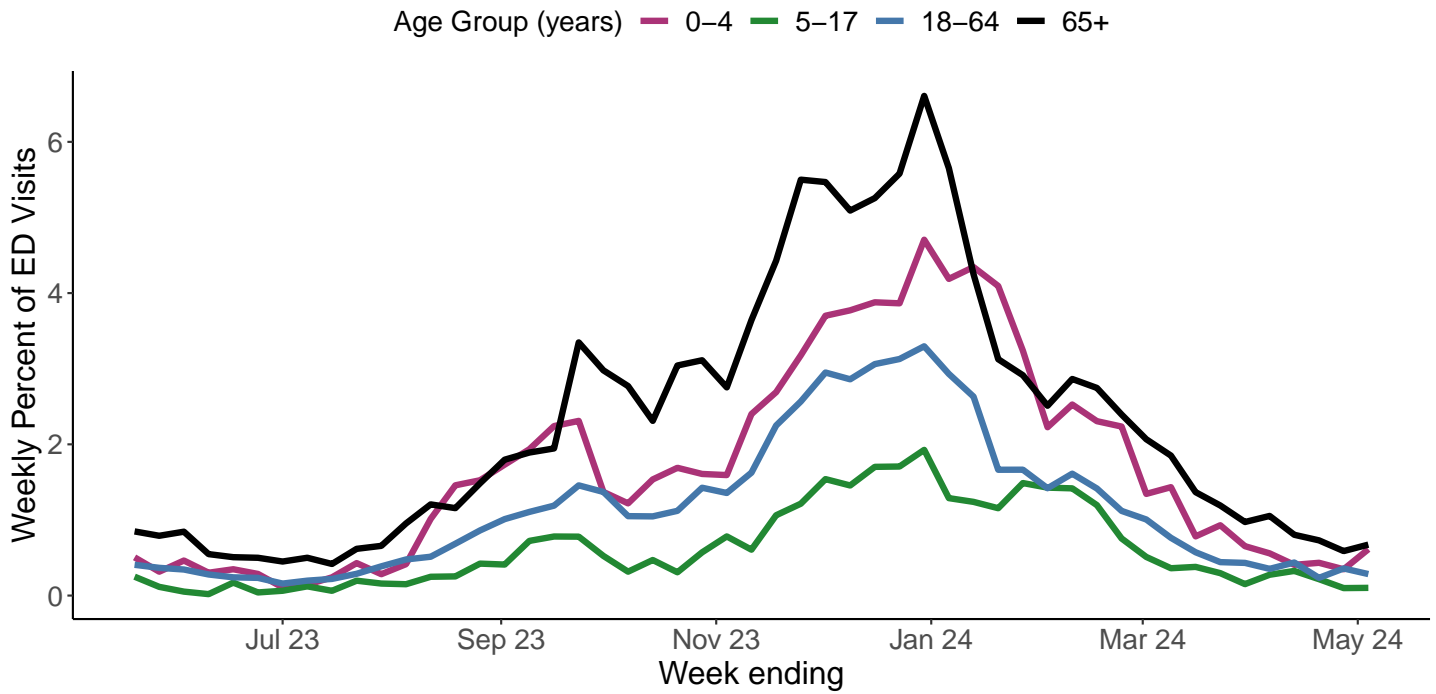
Percent of ED visits with a diagnosis for a respiratory virus or acute respiratory infection (ARI), NSSP



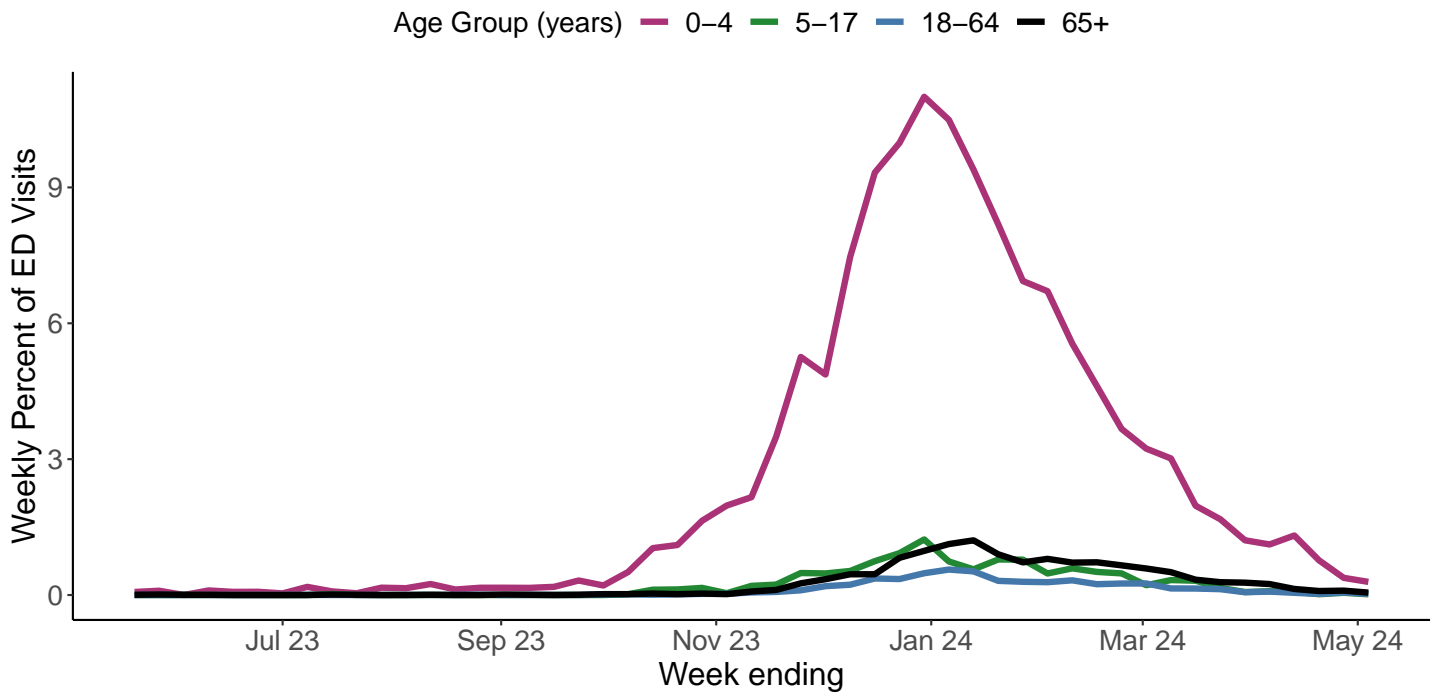
Percent of ED visits with a diagnosis for influenza by age group, NSSP



Percent of ED visits with a diagnosis for SARS-CoV-2 by age group, NSSP



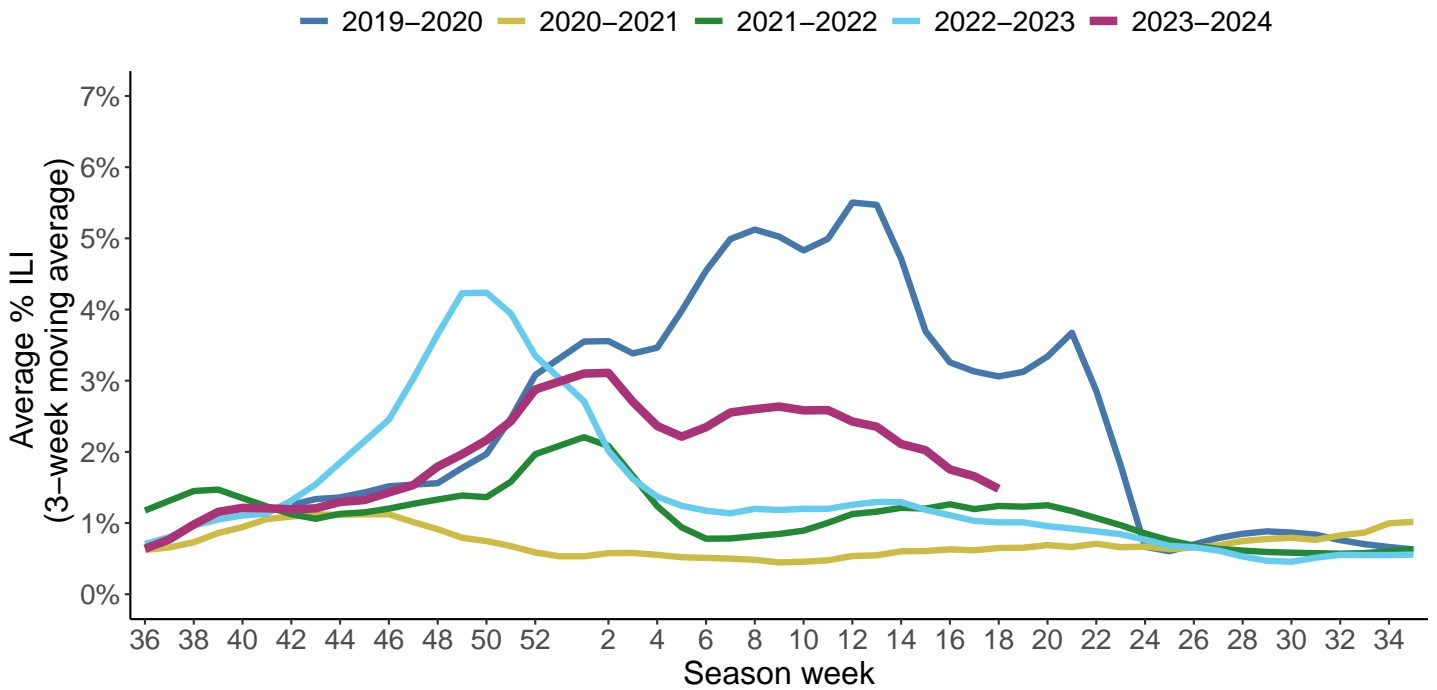
Percent of ED visits with a diagnosis for RSV by age group, NSSP





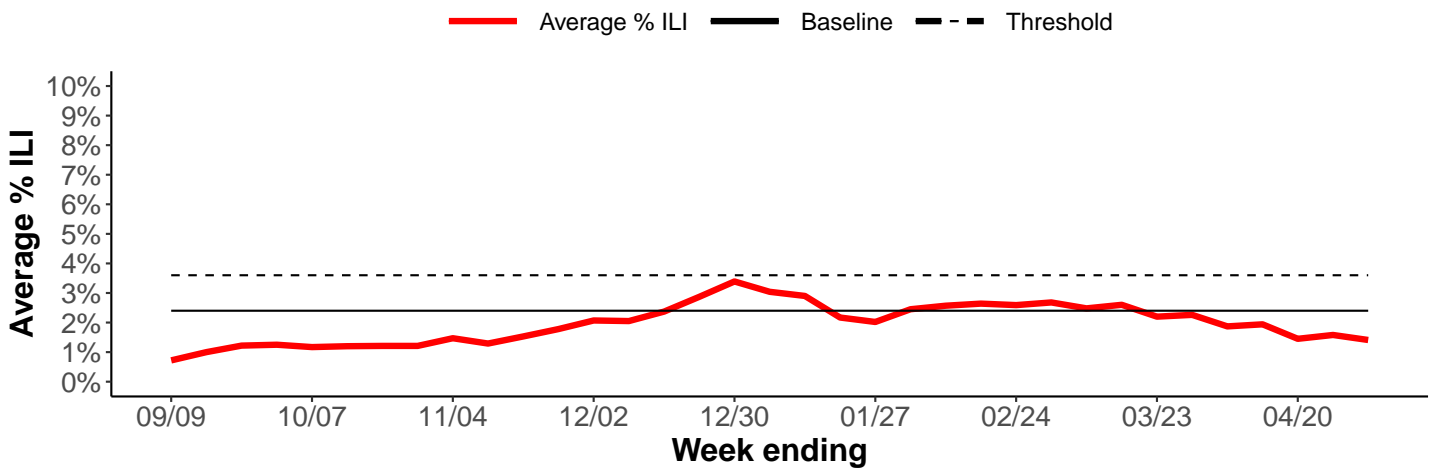
# Wisconsin ILI Activity

Three-week average percent of visits for ILI by influenza season, ILINET

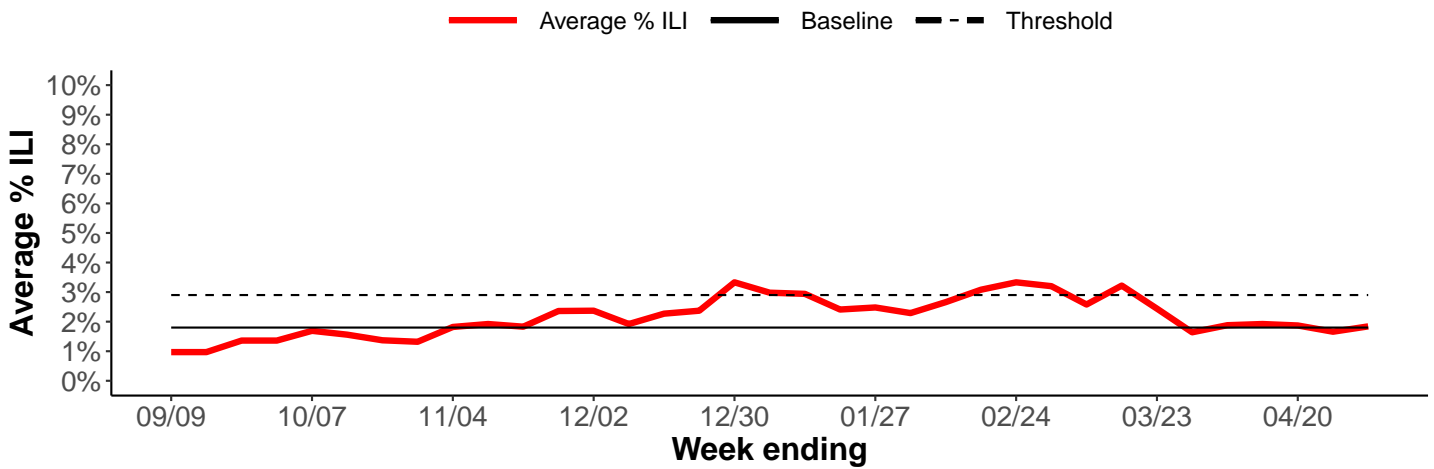


Average percent of visits for ILI by public health region, ILINET

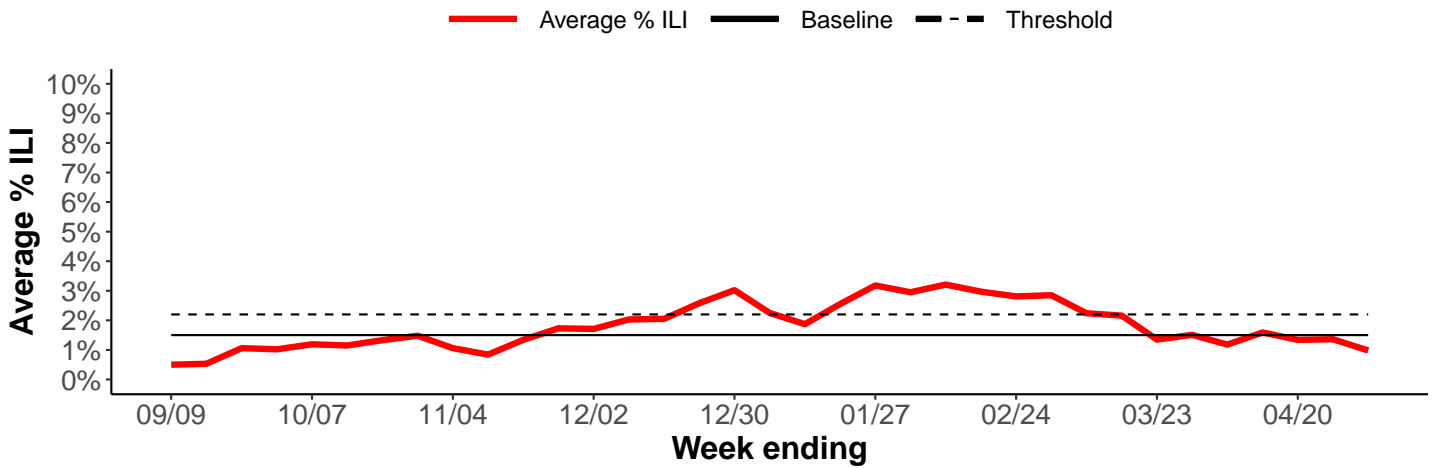
## Wisconsin



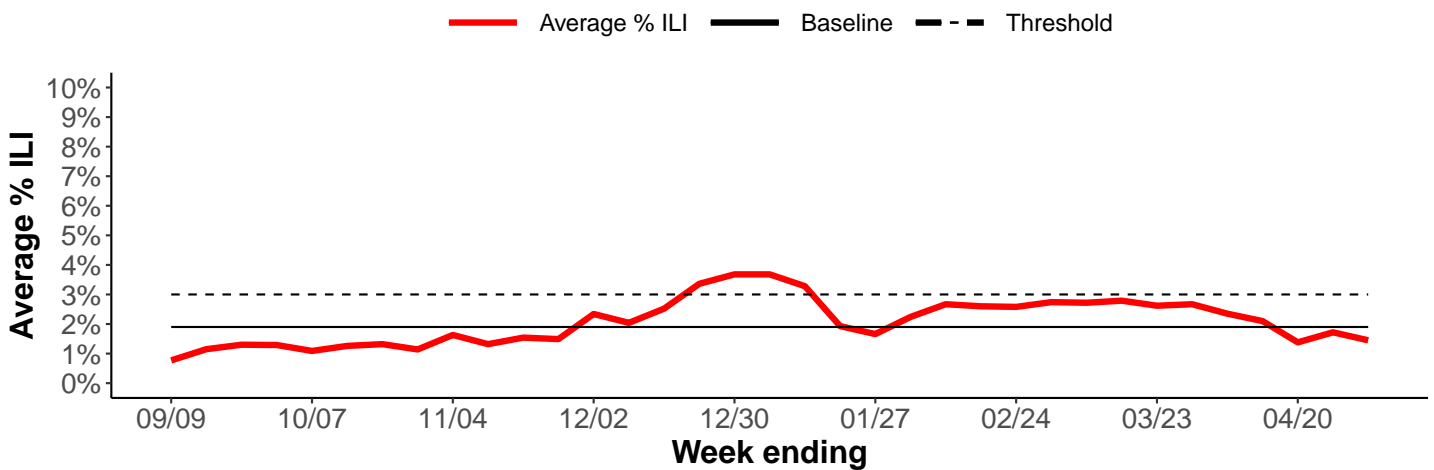
### Northeastern Region



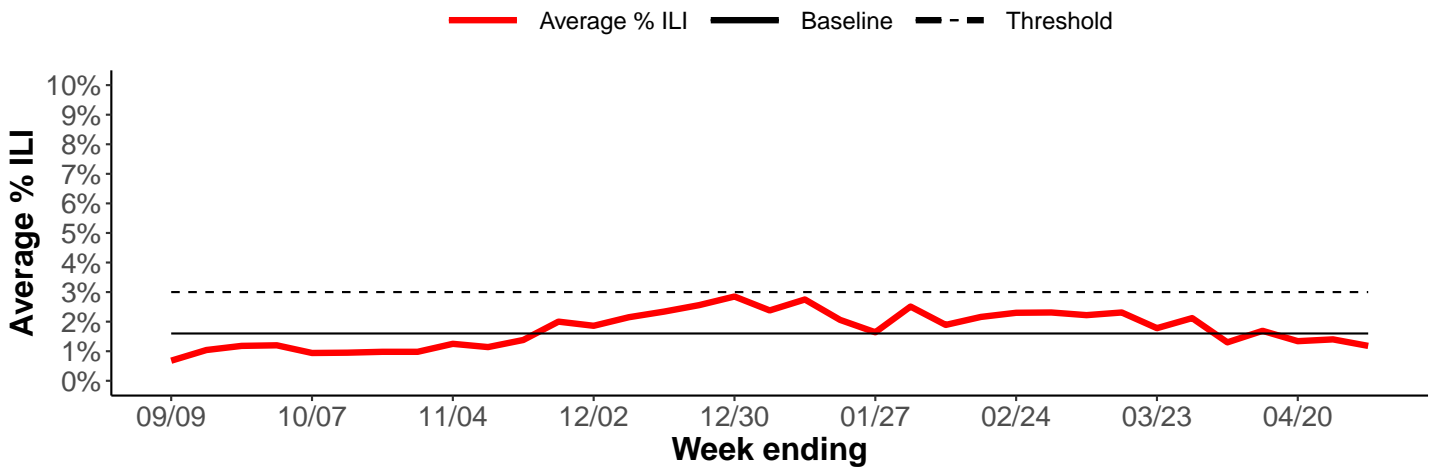
### Northern Region



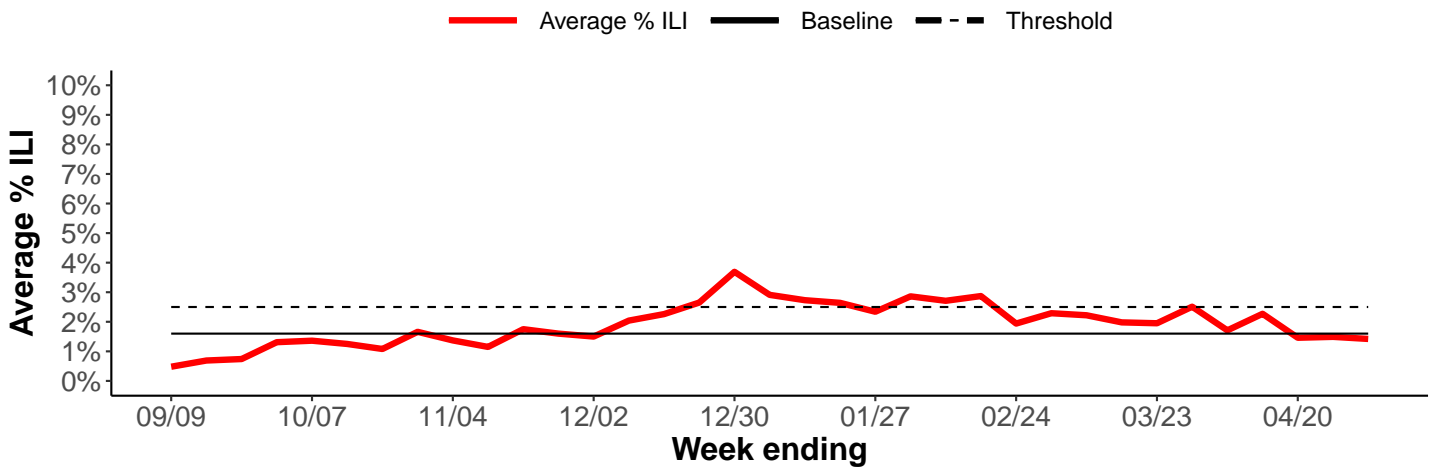
### Southeastern Region



### Southern Region



### Western Region



# Understanding the Data

## Surveillance Report Description

<b>Influenza-like Illness (ILI)</b>	Patients who present to a clinician with a fever $\geq 100$ degrees F and either a cough or sore throat.
<b>Influenza-like Illness (ILI) Activity</b>	Using baseline (expected value data used for comparison) in each of the public health regions in Wisconsin ( <a href="https://www.dhs.wisconsin.gov/lh-depts/counties/index.htm">https://www.dhs.wisconsin.gov/lh-depts/counties/index.htm</a> ), ILI below baseline is considered low activity, ILI between baseline and threshold levels is considered moderate activity and above threshold is considered high activity. (1)
<b>Acute Respiratory Illness (ARI)</b>	ARI is a broad definition designed to capture all diagnoses related to respiratory illness, including SARS-CoV-2, influenza, pneumonia, and cough
<b>Predominant virus of the week</b>	These data are compiled from over 40 laboratories in Wisconsin that perform rt-PCR testing, and shows the viruses that have the highest percentage of positive tests.(2)
<b>Influenza-Associated Pediatric Mortality</b>	Deaths among children $< 18$ years old, with influenza as the cause of associated cause of death. This is a state and nationally reportable condition. (3)
<b>Deaths Due to Pneumonia, SARS-CoV-2, Influenza and RSV</b>	Proportion of deaths due to pneumonia, RSV, influenza, and SARS-CoV-2 are extracted from Vital Records managed by the Office of Health Informatics through ICD-10 codes and death certificate text searches. (4)
<b>Respiratory Viruses by PCR</b>	A molecular laboratory method used to detect nucleic acid (DNA/RNA) in viruses, including influenza and RSV.
<b>Influenza-Associated Hospitalizations</b>	Patients hospitalized for $> 24$ hours with a laboratory-identified (by rapid antigen or rt-PCR tests) influenza.(3)
<b>Emergency Department Data</b>	These data are from the National Syndromic Surveillance Program or NSSP. Visit information from almost all EDs in Wisconsin are reported from hospital electronic medical records to NSSP in near-real-time. Diagnoses used included the CDC Broad Acute Respiratory DD v1, the CDC COVID-Specific DD v1, CDC Influenza DD v1, and the CDC Respiratory Syncytial Virus DD v1.(5)

### Additional Resources

- The CDC Influenza Homepage (<https://www.cdc.gov/flu/>)
- The National Respiratory and Enteric Virus Surveillance System (NREVSS) (<https://www.cdc.gov/surveillance/nrevss/index.html>)

### Data Sources

1. CDC Outpatient Influenza-like Illness Surveillance Network (ILINet)
2. Wisconsin Laboratory Information Network and CDC National Respiratory and Enteric Virus Surveillance System (NREVSS)
3. Wisconsin Electronic Disease Surveillance System (WEDSS)
4. Division of Public Health, Office of Health Informatics, Vital Records
5. National Syndromic Surveillance Program (NSSP) data from ESSENCE (Electronic Surveillance System for Early Notification of Community Based Epidemics).