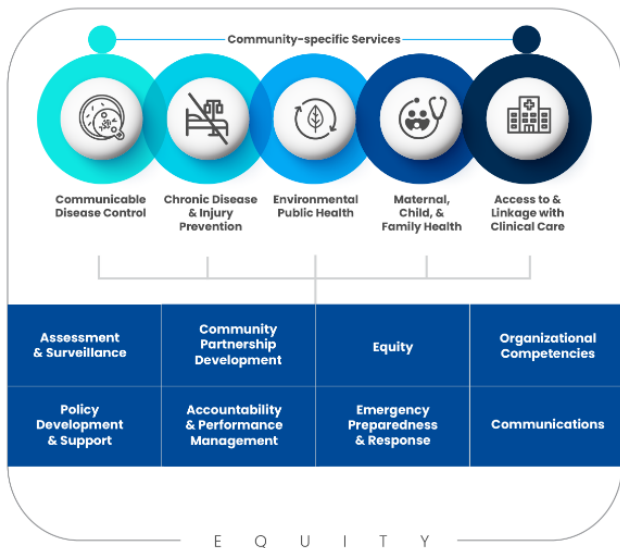


# Crawford County Health Department

**Assessment & Surveillance**  
Collection and review of current health data and use it to implement local programs and services.

The Foundational Public Health Services (FPHS) framework outlines the unique responsibilities of governmental public health and defines a minimum set of Foundational Capabilities and Foundational Areas that must be available in every community.



The health department adopted the Foundational Public Health Services framework in 2022 and has used it to communicate our services, resources and work with stakeholders, partners, and the community.

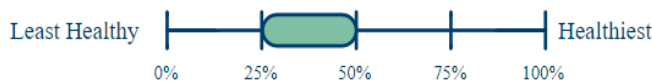
The health department uses two primary assessment tools, the Community Health Assessment & County Health Rankings to assess population health status and public health issues facing our community. The results of these assessments help guide the priorities to be addressed in the county.



1. A **Community Health Assessment** is a systematic examination of the health status indicators for a given population that is used to identify key areas of concern for the health of the community. This assessment is completed every three years in conjunction with community partners. We completed the community health assessment at the end of 2021. Priorities identified in the 2021 Community Health Assessment included:
  - a. Empowering People Through Awareness & Education
  - b. Connecting People to Services & Resources
  - c. Creating a Healthy Environment & Culture of Wellness Across the Lifespan

2. The **County Health Rankings** provide a snapshot of a community’s health and a starting point for investigating and discussing ways to improve health. It is based on a conceptual model of population health that includes both Health Outcomes (length and quality of life) and Health Factors (determinants of health). The 2022 Health Rankings report ranked Crawford County in the mid to low range of counties in Wisconsin for Health Outcomes and Health Factors.

### Health Outcomes



### Health Factors



### Community Health Improvement Plan (CHIP)

– The 2022-2024 Crawford County CHIP outlines goals and tactics designed to address the needs, gaps and barriers to services and promote healthy living in the community. This plan is developed and followed by community partners working toward making our community a healthy place to live, work, learn and play. The key areas of focus in this plan include:

- Mental Health
- Collaborative Health Promotion
- Connection to Services
- Healthy Environments

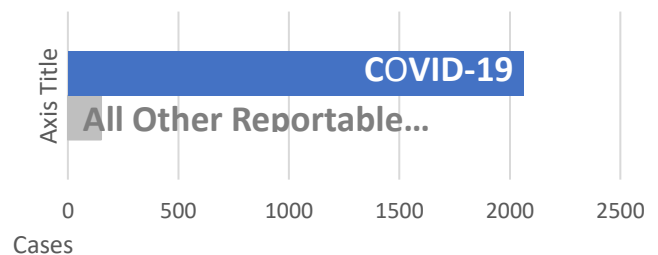
A community health improvement plan team monitors activities addressing these priorities in the county and records progress. This team engages groups and organizations in aligning efforts toward these goals.

**Strategic Plan** – The health department’s strategic plan was developed in 2019 and continued through 2022 as a guide for our priorities and influenced day-to-day activities. The areas of focus since 2019 have been public health promotion, modernization, and community outreach & engagement.

**Communicable Disease Control**  
Control & prevent the spread of diseases in the community.

The Health Department is mandated by State of WI (DHS Chapter 145) to follow-up on over 80 communicable diseases and illnesses that includes, but is not limited to, the following: foodborne & waterborne, vector-borne, respiratory, vaccine-preventable, and sexual transmitted diseases. Communicable disease is tracked through a channel of communications at the local, state, and regional levels and allows for prompt investigation of possible outbreaks and implementation of control measures to reduce further illnesses, death, and health care costs. In 2022, COVID-19 continued to be the highest reportable disease we followed up with.

### COVID-19 Continued to be Dominant in 2022

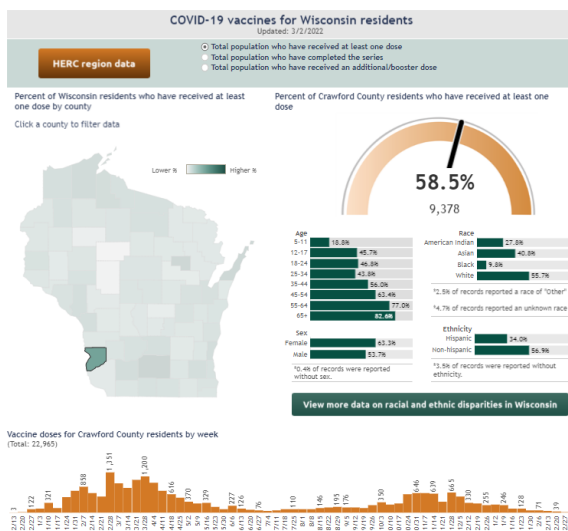


The COVID-19 Pandemic is the largest outbreak of a communicable disease that we have seen in our lifetime. Crawford County Health Department started the response in February 2020 and continued to respond through 2022. In 2022, the COVID-19 response did shift away from intense disease investigation to more promotion of testing, vaccination, and education.

The health department provided the following to the community:

- 315 primary COVID dose vaccination series.
- 215 COVID bivalent booster vaccinations.
- 18 employee antigen tests administered.
- 200 Community Tests in Gays Mills
- 1437 antigen test kits distributed to community members.
- Provided guidance to individuals, organizations and general public regarding current guidance and community disease activity through phone calls, newsletters, emails, FB posts, and press releases.

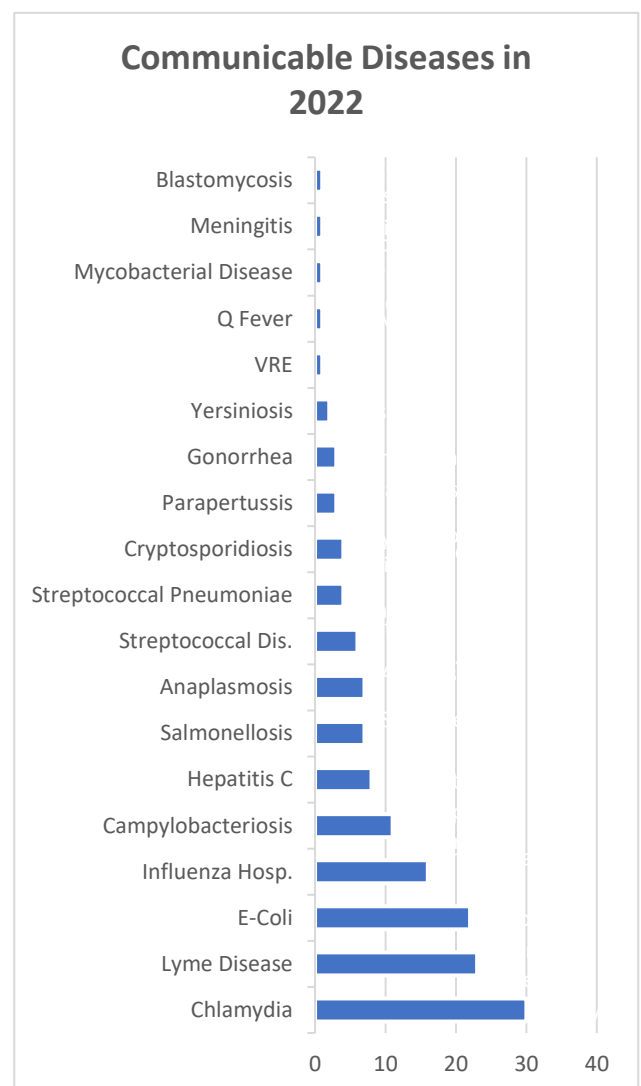
The following chart shows details of the population vaccinated in Crawford County as of March 2023.



This data can be found at <https://www.dhs.wisconsin.gov/covid-19/vaccine-data.htm>

## Other Communicable Diseases

Health department staff reaches out to every individual that is diagnosed with a reportable disease. Education on the disease is provided as well as discussion of strategies to stop the spread to others and/or determine how the individual was infected. If the infection source could infect others, the health department may need to address the source to stop further spread. The following image is the breakdown by diseases that were reportable in 2022.



## Immunizations

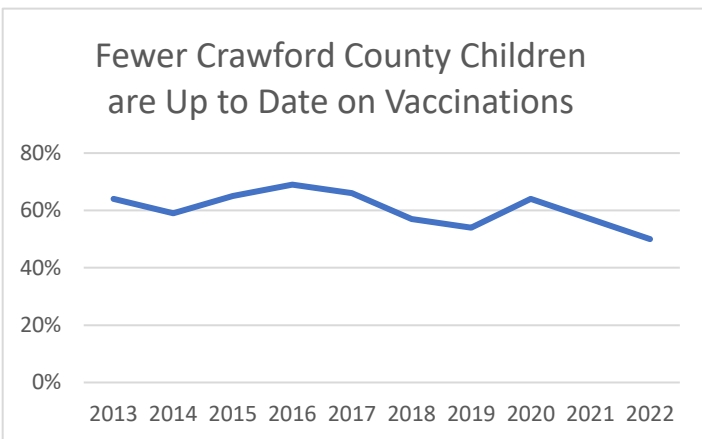
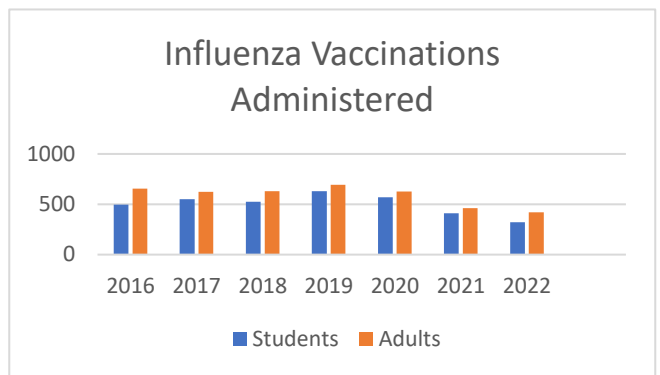
The Health Department is a Vaccines for Children/Adult Program (VFC/VFA) provider. The VFC Program provides recommended vaccines free to children who are less than 19 years of age and meet one of the following criteria: Medicaid eligible, uninsured, underinsured or are American Indian or Alaska Native. The VFA Program provides recommended vaccines to adults that are uninsured or underinsured.

- 60 vaccinations were provided through the VFC Program by the department.
- 22 vaccinations were provided through the VFA Program by the department.

The health department monitors vaccination statuses for all children under two years of age in Crawford County to ensure most of the population is up to date on their vaccinations to prevent future outbreaks of vaccine preventable diseases. Letters are sent and/or calls are made to parents of children in this age range to offer vaccination education and remind them of recommended schedules for receiving vaccinations. In the last three years, we have seen a decrease in the percentage of children that are up to date by age two.

The health department continues to offer influenza vaccinations to the public. Clinics were held at the Gays Mills Community Commerce Center and at the Crawford County Administration Building in Prairie du Chien.

The Annual Functional Mass Influenza Immunization Exercise offering flu vaccinations to students at the North Crawford School District, Prairie Catholic School, Prairie du Chien Public School District, Seneca School District, Wauzeka-Steuben School District and helps provide access to flu vaccine to school-aged children.



### Chronic Disease & Injury Prevention

Promotion & implementation of services, resources, and education that help prevent & support people with chronic diseases or injuries.

### Crawford County on the Move

49 individuals participated in this 9-Week Program that includes weekly health education, a group walk, and emails to support participants to move more and to focus on general overall health. Sessions were held at six locations throughout the county and led by volunteers.



## Living Well with Chronic Conditions

3 individuals participated in this evidence-based workshop for people with on-going health problems. Provided in partnership with ADRC, the workshop provides participants with tools to better navigate life's "ups and downs" and increase their health knowledge.

## WI WINS Program

19 out of 23 retail stores checked did not sell tobacco products to underage youth in Crawford County. This statewide campaign uses a science-based strategy to decrease youth access to tobacco products and help retailers avoid fines.

The health department conducts investigations, retailer education and training, media outreach, and community education in partnership with law enforcement and the state program. If retailers sell, a letter is sent to offending retailers offering free resources and training. In some cases, law enforcement will give fines.

TOBACCO  
~~eighteen~~ twenty-one

## NARCAN® Direct Program

27 NARCAN® kits were distributed by Crawford County Health and Human Services. This program provides free NARCAN® for community distribution. The NARCAN® is given to agencies that serve people who are using opioids or people who may witness an opioid overdose. People receiving NARCAN® are trained how to identify an opioid overdose and how to use it to reverse an opioid overdose.

## The Opioid Epidemic, Harm Reduction & NARCAN®

13 individuals attended the presentation to Learn the Facts. Lose the Stigma. Save a Life. The presentation includes opioid epidemic history, opioid death statistics, NARCAN® and how community members can be an important part of prevention and harm reduction moving forward.

## Drug Take Back Day

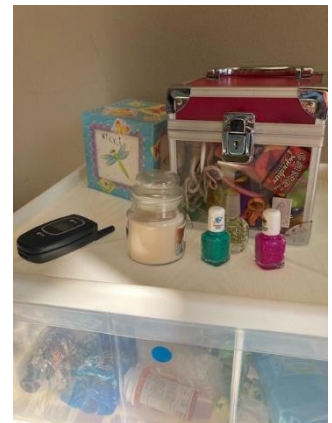
Eight individuals from the community brought in unused or expired medications for disposal in Gays Mills. This is a partnership with the Sheriff's Department to prevent medication misuse.

## Hidden in Plain Sight

22 community members participated in this interactive exhibit and many more stopped out of curiosity to ask questions.

Hidden in Plain Sight is a valuable tool for parents and other

caregiving adults to utilize in recognizing items in a youth's bedroom that could be signs of substance use. Public Health partnered with the Sheriff's Department to bring this important display to the Crawford County Fair last August. Hidden in Plain Sight was also available at the Drug Take Back Day in October.





## Gun Lock Distribution

39 gun locks were given out to community members and law enforcement. Firearms are the most used method of suicide and the most lethal. Gunlocks can provide the time to possibly save a life. Thanks to a generous gunlock donation from the Captain John D. Mason Program, Public Health has free gunlocks available to anyone. Public Health was also able to work with NCS Gunsmithing in Prairie du Chien to help them enroll in the Wisconsin's Gun Shop Project and Safe Storage Program.

## Environmental Public Health

Focuses on the environments in which people live and ensuring they are healthy and safe.

## Environmental Health Complaints (EHC)

16 EHC were investigated in 2022.

Environmental health is a key part of any comprehensive public health system to identify and decrease chemical and other environmental exposures in air, water, soil and food to protect people and provide communities with healthier environments. The health department receives and investigates environmental complaints and collaborates with other agencies to reduce environmental health hazards.



## Water Quality

In 2022, well water test kits were supplied to 2 families with newborn babies or pregnant



women. There was also one test given to a person that experienced flooding.

Safe clean water is one of the most important substances in our lives for drinking, cooking, bathing, and cleaning. High nitrate-nitrogen levels can pose health risks, especially if consumed by infants, pregnant women, and women trying to become pregnant. Currently, we provide private well water test kits free of charge in cooperation with the State Lab of Hygiene for pregnant women, infants (6 months or younger), and to residents affected by flooding who have a private, untested water supply.

## Lead Poisoning Prevention

8 out of 139 lead tests came back elevated in Crawford County.

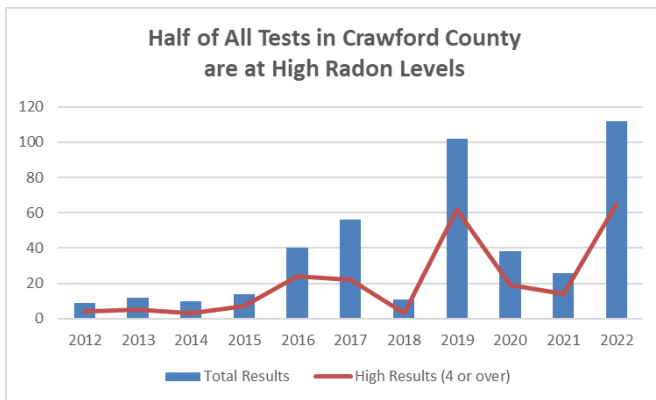
Lead poisoning is caused by



swallowing or breathing in dust from lead-based products and causes injury to the brain and other body systems and can last a lifetime and across generations. In Wisconsin, lead poisoning is most often linked to lead in the paint and varnish in our older homes. The health department follows up on all high lead results. A nurse home visit is completed to provide education on prevention measures and directions for next steps. Follow-up testing is recommended and monitored.

## Radon Testing

154 free radon kits were distributed to Crawford County residents with 50% of those having high radon results. Radon is an invisible and odorless gas and is one of the most serious health hazards found in indoor air. This gas is the leading cause of lung cancer in non-smokers; the second leading cause of lung cancer overall. Radon occurs naturally in the soil and accumulates in homes especially during the winter months.



Testing is the only way to know what the radon level is in your home. Crawford County provides test kits to homeowners free of charge through a radon grant for the 6 surrounding counties of Vernon, Iowa, Richland, Lafayette, Grant, and Crawford.

The EPA recommends homes with radon levels at 4 or greater to undergo some type of mitigation to decrease one's radon-related health risks. If elevated radon is found, it can be easily and effectively corrected.

## Mosquito Abatement

91 sites in the county were checked for potential mosquito habitation.

Education and recommendations

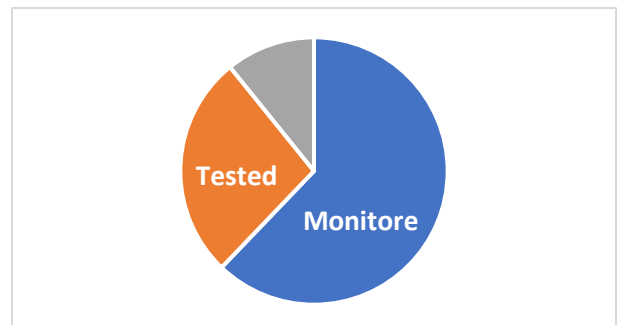
were provided to property owners and 60% of



those with potential mosquito habitats resolved the issue when rechecked. Tires and other containers offer habitat for mosquitos that carry diseases such as West Nile Virus and La Crosse Viral Encephalitis. The Health Department contracted with Joseph Writz, owner of Driftless Region Vector Control LLC, for mosquito abatement services. Services include canvassing communities in Gays Mills, Prairie du Chien, Soldiers Grove, Wauzeka, Eastman, Ferryville, and Seneca for potential mosquito-related human health hazards, to identify and larvicide habitat sites, and to provide education on how to decrease the incidence of mosquito breeding.

## Rabies Control Program

The county had 37 animal bite reports in 2022. The health department, local law enforcement, and veterinarians work together to monitor potential rabies exposure and enforce applicable regulations. Animal bite investigations are initiated through law enforcement with the issuance of an animal bite order to an animal owner. Health department staff then contacts the victim to assure proper treatment was received, contacts the owner to assure proper quarantine of animal in question, and proper veterinarian surveillance. Animals suspected of having rabies are quarantined and monitored or euthanized and tested for rabies. All animals tested negative or were determined to be healthy after monitoring.



## Maternal, Child & Family Health

Work to connect families to resources and eliminate barriers where all families are healthy and thriving.

### Car Seat Program

12 car seat checks and 4 car seats were distributed to county residents. The health department's car seat program ensures children's safety by providing training and support to families. A certified Child Passenger Safety Technician is available to offer car seat checks, free of cost, for anyone that would like their current car seat checked to ensure it is installed correctly and safely.

### Postpartum Visits

5 postpartum visits were completed by our Health Department Nurses. Home visits are provided to high-risk mothers and/or babies that are referred to us by healthcare providers. These visits link families to services and resources that will help them be safe and healthy.

### Suicide Prevention

Health Department staff took part in Question, Persuade, Refer (QPR) training in 2022.

Recognizing the warning signs of a suicide crisis and how to question, persuade and refer someone to help is all part of this suicide prevention training. Health department staff

participated in a Community QPR group focused on bringing QPR to the community. Classes will be provided in the community in 2023.



### Fluoride Varnish

5 children received fluoride varnish at the Hoffman Hall play group in 2022. Fluoride Varnish improves children's oral health. Children are eligible for Fluoride Varnish Treatment every 3-4 months. If they aren't eligible to receive it, the nurse can still get a visual of teeth and gums and make referrals as necessary.

### Life Skills Education for Youth

Eighty-two students in 4 grades participated in this 9-week program at Seneca Schools. As a researched substance use prevention program, Botvin Life Skills targets factors that promote initiation of substance use and other risky behaviors and give youth the skills to make healthy choices.

## Access to & Linkage with Clinical Care

### School vision screening

141 students were referred for an eye appointment after school vision screening. The goal of the Vision Screening Program is to identify treatable or preventable causes of commonly occurring visual problems in preschool and school-age children.

Our vision screening program partners with Lions Clubs Zone 5 to serve the community by providing Early Childhood Vision Screening.

The vision screening uses the Plusoptix screener which employs state of the art technology in vision with the ability to screen children quickly and simply. With a quick "picture" the device instantly checks for a range of vision conditions and will print a detailed screening report to aid the eye care professional in follow up examinations.



## TB testing

84 Tuberculosis skin tests were administered in 2022. These are available upon request for college entrance requirements, teachers, and school personnel. Skin tests are also given to personnel at the Opportunity Center, group home workers, new clients at foster homes, and the public.

## Wisconsin Tobacco QuitLine

21 referrals to the WI Tobacco Quit Line that supports people who are ready to quit smoking.



Individuals are helped through the WI Quit Line through the FAX to Quit program. The health department and other community medical providers use this program to offer smoking cessation education and referrals to quit smoking.

## Outpatient Mental Health Clinic

Crawford County Health and Human Services provides an Outpatient Mental Health Clinic 1 to 2 times a week. This clinic provides mental health services from a Board Certified Psychiatric Mental Health Nurse Practitioner that offers mental health assessments/diagnosing with the development of a treatment plan and prescribing of medications to treat diagnosed mental illness. A health department nurse works closely with the provider and is available to help coordinate the mental health clinic operations and works directly with clients to follow up on treatment plans, provide medication education and aid in communications between the provider and clients. The Mental Health Nurse also provides other mental health



services such as: case management to support residents that have chronic mental illness, medication setup and monitoring to encourage medication compliance, and administration of psychotropic injectable medications that are prescribed by the provider to improve and maintain mental health to prevent the need for acute hospitalizations related to mental illness.

- Mental Health Clinic Check-ins - ~1,100
- Clients receiving injectable medications – 17
- Clients receiving medication planner set-ups – 5
- RN Case Management – 5

## Blood Pressure Clinics

Total clients contacted through blood pressure clinics was 71. Blood pressure clinics are offered monthly at 2 different locations in the county during at the ADRC meal sites. A nurse checks and records blood pressure for individuals and has a monthly teaching topic to share information with clients. Referrals are made to PCP's as necessary. Vaccinations are also available at these clinics if they are scheduled in advance.

## Clinic Network

The health department holds quarterly meetings with area healthcare clinics to discuss current disease patterns and treatment options and provide education and a networking opportunity between facilities.

## Resource Guide

The Crawford County Resource Guide was developed and is maintained by the health department. This guide can be found on the Crawford County website and is used by many community partners to find resources for residents that will improve health outcomes.

## Community Partnerships

### Crawford County Mental Health Coalition

This coalition addresses access to mental health services and



provides an update on available mental health services. This coalition meets quarterly. The health department is part of this coalition as mental health is a health priority in the county and we are always looking for ways to collaborate efforts to make mental health services more accessible and acceptable for community members. In addition, the Mental Health Coalition is leading the mission to disseminate Question, Persuade, Refer (QPR), a suicide prevention training to the community.

### 7C's Coalition

The health department is part of the 7 C's Health Initiative, which is a multi-jurisdiction coalition that includes seven counties in Western Wisconsin. With the help of our coalition partners and members, we are encouraging people in our communities to live tobacco-free. For more information about 7C's visit [www.7cshealthinitiative.com](http://www.7cshealthinitiative.com).

### Business Connection Group

Every month, a Public Health update e-mail is sent to 14 Crawford County business entities. These updates include Covid news, any new programming offered throughout the county

and varying awareness promotions depending on the month. The e-mail also includes reminders of ongoing trainings that the health department could bring to the businesses.

### Children's Advisory Board (CAB)

The Health Department is an active member of CAB, whose mission is to improve the lives of youth facing adversity. This board is made up of law enforcement, judicial system, education, and health sectors of the county.

## Emergency Preparedness

### Western Healthcare Emergency Readiness

**Coalition** – This regional healthcare emergency readiness coalition (HERC) is comprised of a core group of hospitals and healthcare organizations, local and tribal health agencies, state, regional, and local and tribal emergency management, and emergency medical services, as well as additional members. These partners collaborate for the common goal of making their communities safer, healthier, and more resilient.

### Public Health Emergency Preparedness

Health continues to work with multiple community partners including surrounding public health departments from Iowa and Wisconsin as well as Emergency Management, law enforcement, fire, hospitals, and other health care units to improve our readiness in case of an emergency.